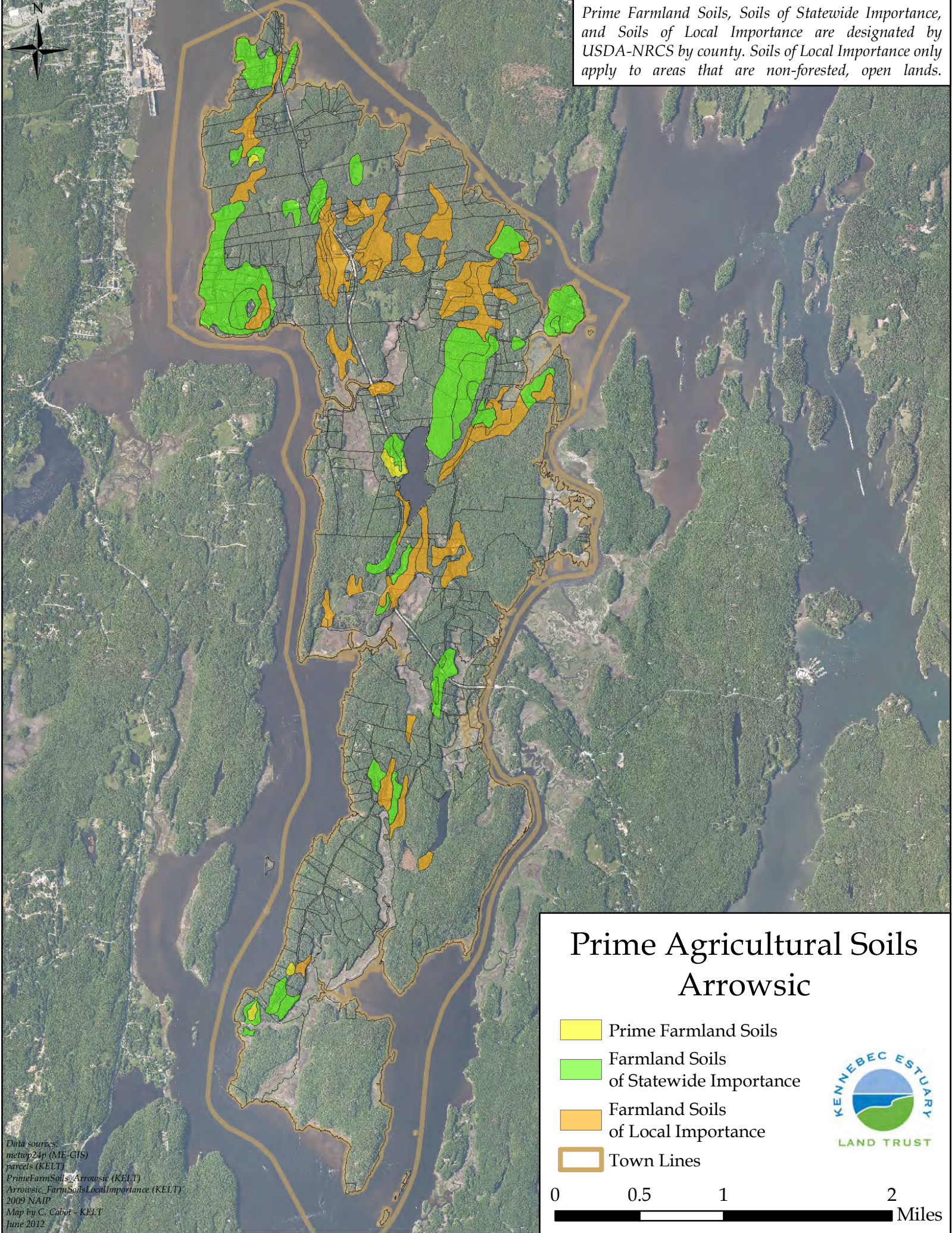






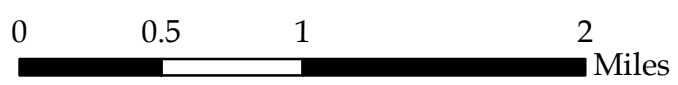


Prime Farmland Soils, Soils of Statewide Importance, and Soils of Local Importance are designated by USDA-NRCS by county. Soils of Local Importance only apply to areas that are non-forested, open lands.



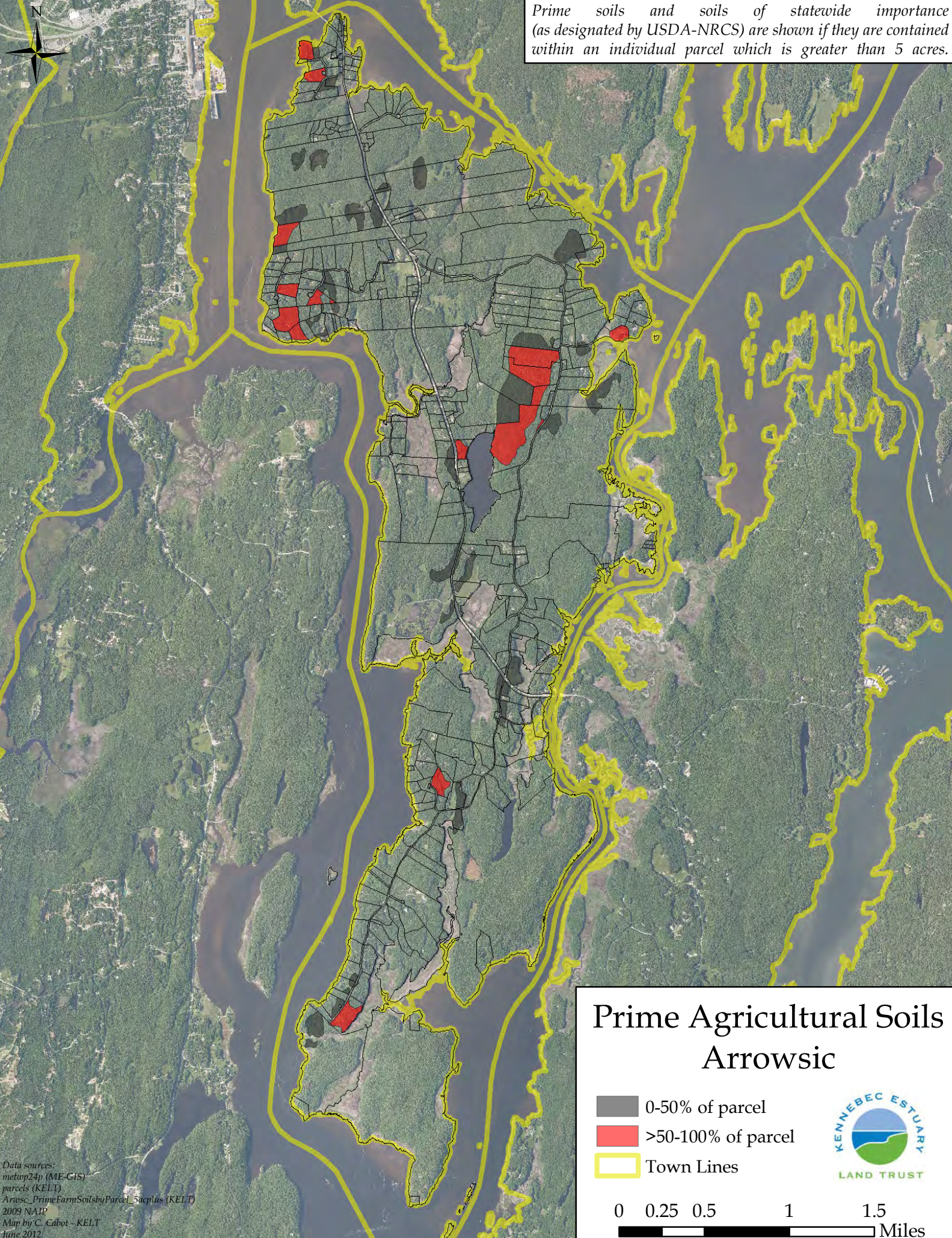
Prime Agricultural Soils Arrowsic

-  Prime Farmland Soils
-  Farmland Soils of Statewide Importance
-  Farmland Soils of Local Importance
-  Town Lines



Data sources:
metwp24p (ME-GIS)
parcels (KELT)
PrimeFarmSoils_Arrowsic (KELT)
Arrowsic_FarmSoilsLocalImportance (KELT)
2009 NAIP
Map by C. Cabot - KELT
June 2012

Prime soils and soils of statewide importance (as designated by USDA-NRCS) are shown if they are contained within an individual parcel which is greater than 5 acres.



Data sources:
metwp24p (ME-GIS)
parcels (KELT)
Arrowsic_PrimeFarmSoilsbyParcel_5acplus (KELT)
2009 NARP
Map by C. Cabot - KELT
June 2012

Prime Agricultural Soils Arrowsic

- 0-50% of parcel
- >50-100% of parcel
- Town Lines

