

Farm Properties Bowdoinham

-  Farms
-  parcels
-  Town Lines

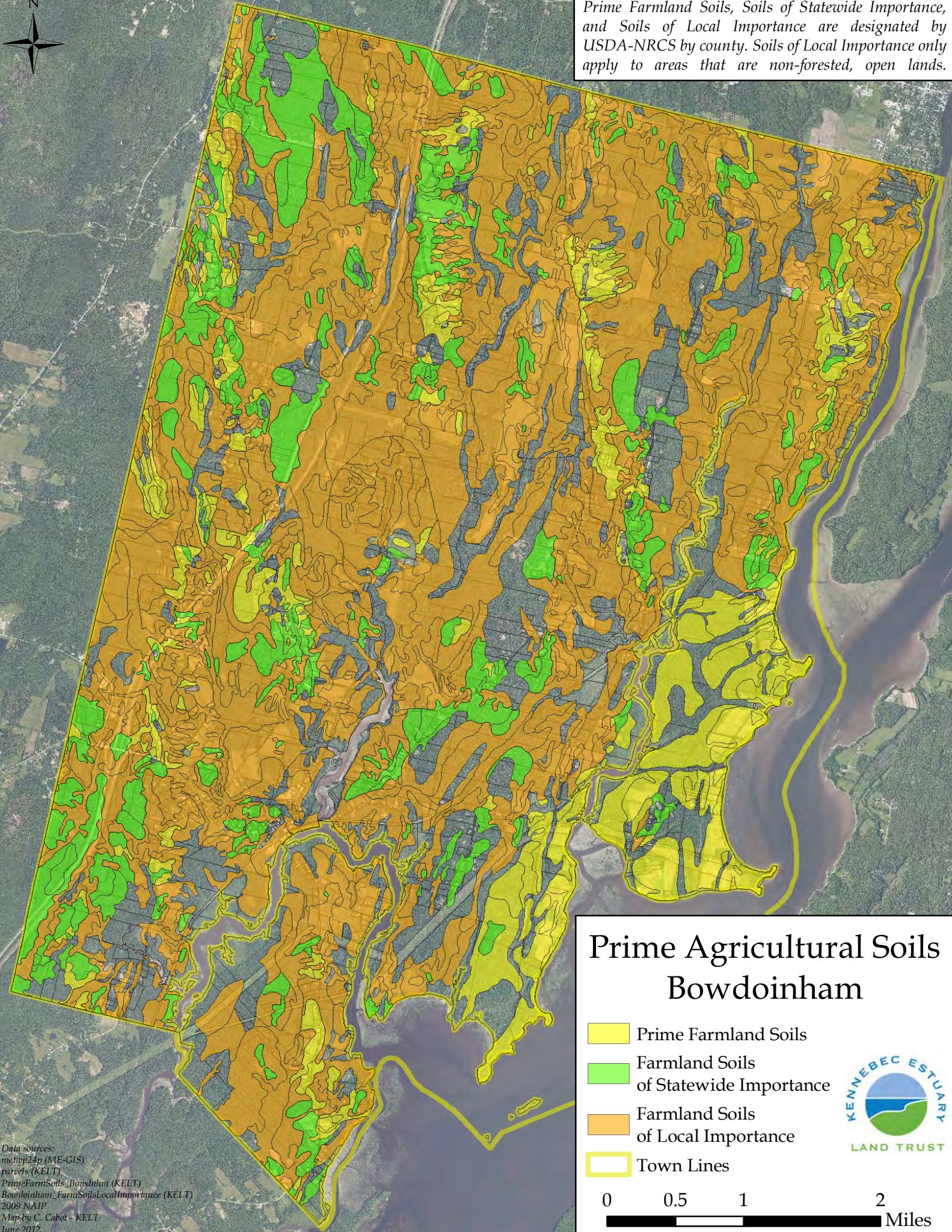


Data sources:
metop24p, parcels (ME-GIS)
Farms, Farm_tax_class (KELT)
2009 NAIP
Map by C. Cabot - KELT
June 2012

Drawn from a geocoded list of farms and properties enrolled in the farmland tax classification. Data provided by the town of Bowdoinham.

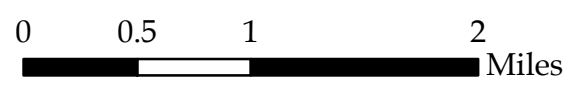


Prime Farmland Soils, Soils of Statewide Importance, and Soils of Local Importance are designated by USDA-NRCS by county. Soils of Local Importance only apply to areas that are non-forested, open lands.



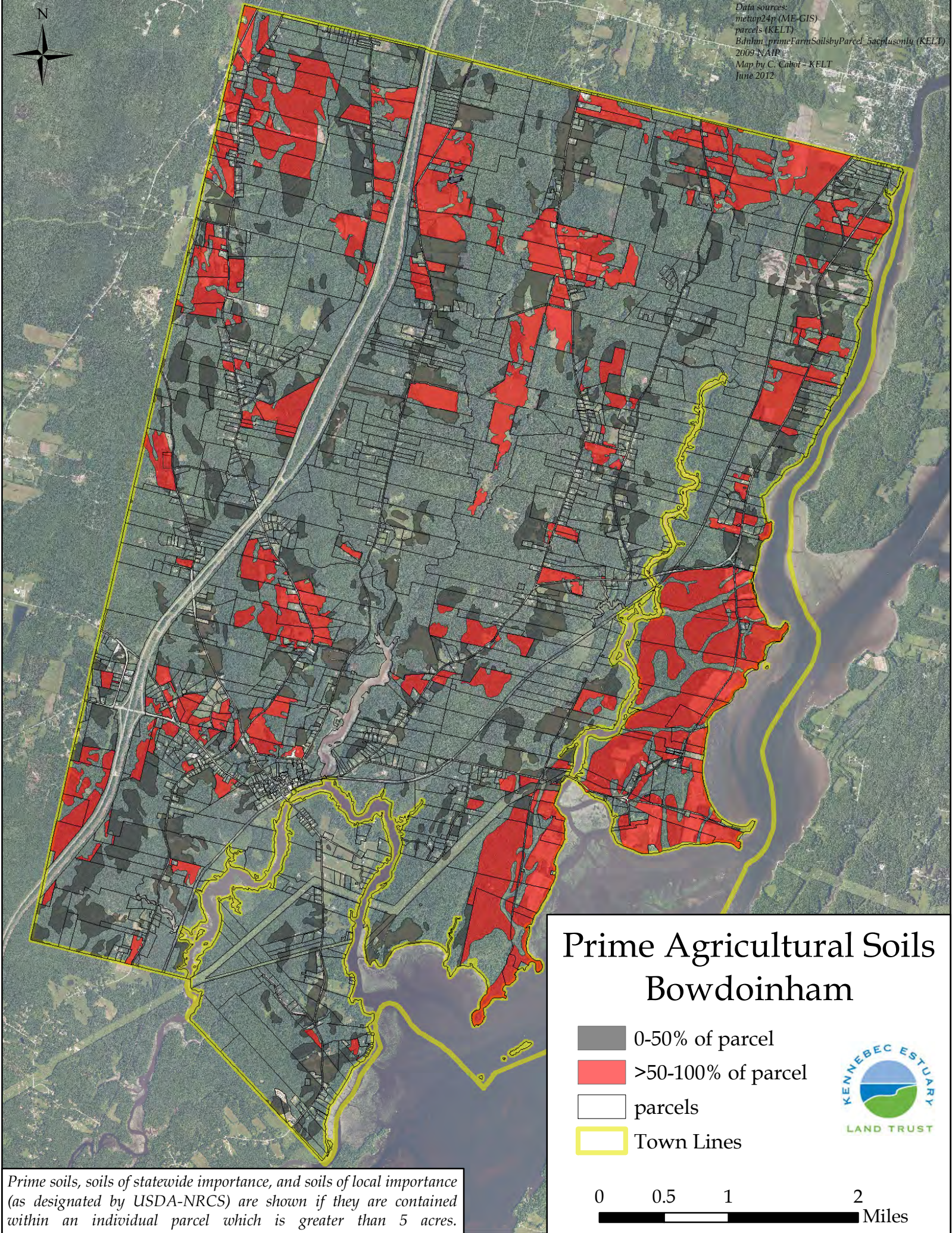
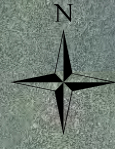
Prime Agricultural Soils Bowdoinham

- Prime Farmland Soils
- Farmland Soils of Statewide Importance
- Farmland Soils of Local Importance
- Town Lines



Data sources:
metwp24p (ME-GIS)
parcels (KELT)
PrimeFarnSoils_Bowdoinham (KELT)
Bowdoinham_FarmSoilsLocalImportance (KELT)
2009 NAIP
Map by C. Cabot - KELT
June 2012.

Data sources:
metop24r (ME-GIS)
parcels (KELT)
Bdnhm_primeFarmSoilsbyParcel_5acplusonly (KELT)
2009 NAIP
Map by C. Cabot - KELT
June 2012



Prime Agricultural Soils Bowdoinham

-  0-50% of parcel
-  >50-100% of parcel
-  parcels
-  Town Lines



Prime soils, soils of statewide importance, and soils of local importance (as designated by USDA-NRCS) are shown if they are contained within an individual parcel which is greater than 5 acres.